

## Cell Dissection

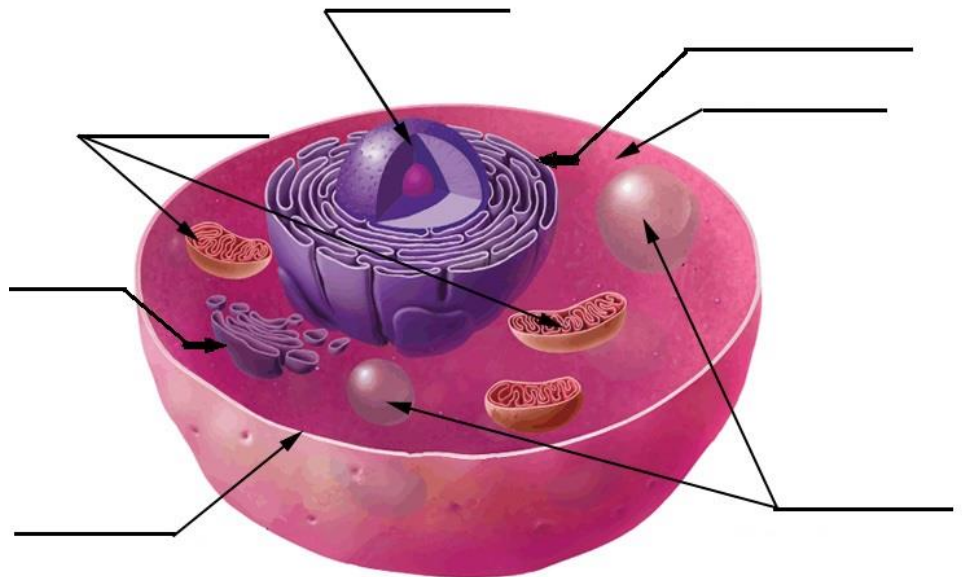
Introduction: This worksheet will explain and show the difference between plant and animal cells.

Procedure:

- Go over diagram
- Label Diagram below
- Place organelles gently in proper location (you only get 5 minutes!)
- Answer questions about your cell

Work Bank: Add the correct amount of organelles to the picture below.

- ✓ Mitochondria
- ✓ Nucleus
- ✓ Golgi Apparatus
- ✓ Endoplasmic Reticulum
- ✓ Vacuole
- ✓ Cell Membrane
- ✓ Cytoplasm



Questions:

1. Which type of cell (plant or animal) is shown in the above diagram?  
\_\_\_\_\_
2. Which type organelle is in the plant cell that is not in the animal cell?
  - a. Mitochondrion
  - b. Cytoplasm
  - c. Chloroplast
3. Explain difference in cell wall and cell membrane  
\_\_\_\_\_  
\_\_\_\_\_

4. (True or False) The animal cell has a cell wall?
  - a. True
  - b. False
5. (True or False) Animal cells undergo photosynthesis?
  - a. True
  - b. False
6. How many vacuoles does a plant cell have?
  - a) A lot
  - b) One
  - c) Two
7. What is the main function of the Golgi Apparatus in plant and animals cells.

---

---

8. (True and False) Is Lysosomes the power house of the cell?
  - a. True
  - b. False
9. What is the function of the nucleus?

---

---

10. (True or False) Plant cells have both a cell wall and a cell membrane?
  - a. True
  - b. False
11. What are chloroplasts used for in plant cells?

---

---